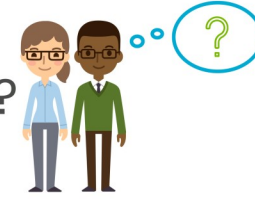


# Do I Need Personal Protective Equipment?



## General Information

**Be Prepared!** Ensure you have your PPE kit ready and available at all times for all shifts.

### What type of PPE is appropriate?

Unable to physical distance, but no hands on support required	=		Surgical mask only
Unable to physical distance and minimal hands on support required, or food handling/preparation required	=		Surgical mask and gloves
Unable to physical distance and personal care required, or high likelihood of physical intervention with behaviours of concern occurring	=		Surgical mask, gloves and eye protection

## Contact Scenarios

